

# WYNN

**(SOUTH EAST ASIA) PTE. LTD.**



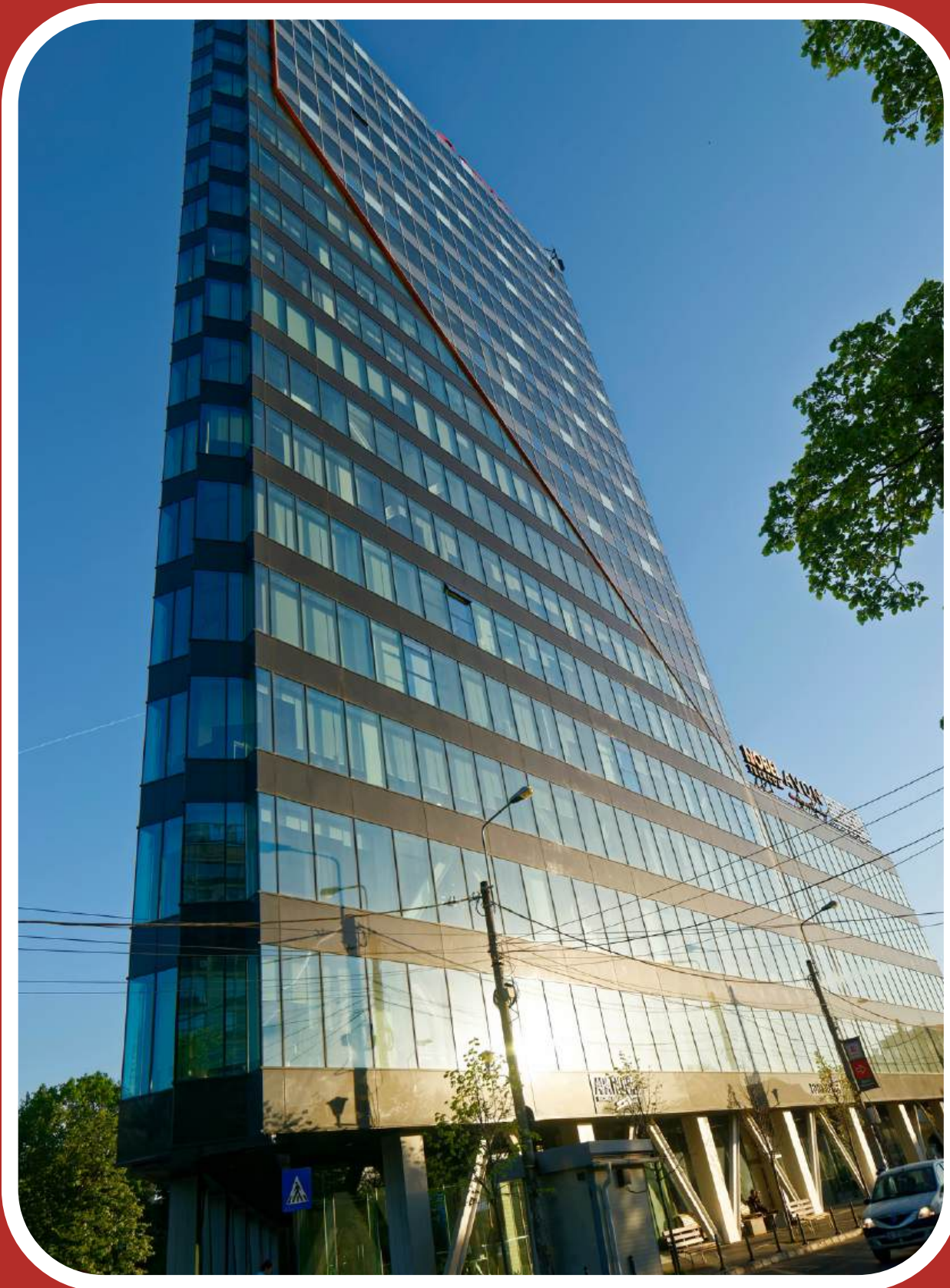


South-East Asia is a vast region with a rich and immensely diverse cultures. Rapidly growing economies and increasing mobility are accelerating changes to the region.

Singapore is the economic leader of South-East Asia, with a vibrant, fast-paced lifestyle and fascinating heritage. We partner with our clients to provide multi-disciplinary services on a wide range of projects throughout this region.

We are able to support clients with personal regional service while giving exceptional expertise from our modern resources





# ABOUT OUR COMPANY

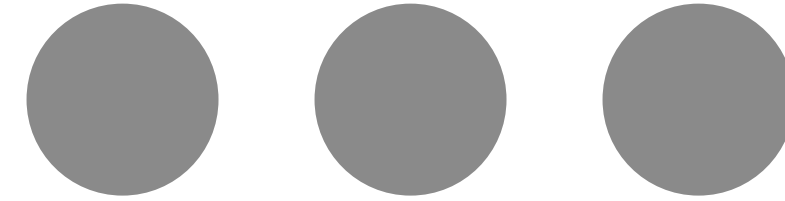
WYN (South East Asia) Pte Ltd [formerly known as WME (South East Asia) Pte Ltd] was established in December 2017 is an independent multi-disciplinary consultancy providing both Civil & Structure and Mechanical & Electrical Engineering Consultancy Services for the built environment.

WYN is led by Directors with vast experience and long track records on wide range of developments such as Hospitality, Commercial, Residential, Industrial, Institutional, Healthcare as well as Infrastructure projects both in Singapore and the region. Our team is committed to providing a client-focused integrated service and deliver customized building engineering outcomes, integrating structural and building services on various type of building projects.

We are passionate about creative buildability. We constantly aim to deliver practical cost-effective design solutions, developed through in-depth knowledge of best practice and an openness to innovation at all stages of a project's development.

We are committed to work closely with our clients to build strong and lasting relationships by responding to the needs and aspirations of our clients.

# OUR MISSION



**CLIENT  
SATISFACTION**



**ENGINEERING  
EXCELLENCE**



**PEOPLE  
DEVELOPMENT**

# OUR APPROACH

1

## **Personal Touch**

We provide hands-on senior input and guidance on every project to deliver strong technical design solutions in a considered manner tailored to client requirements.

We engage with the stakeholder at an early stage to review and reaffirm the project aspirations to ensure client satisfaction upon completion.

2

## **Responsive**

We are committed and responsive to project needs and challenges. Driving by our technical expertise and know-how, we test the boundaries of accepted best practice to develop robust engineering solutions. We believe in employing a holistic design process that considers the environment, architecture, structure, services, and project needs as one.

3

## **Quality**

Excellence is our core value; everything we do is driven by it. This focus is made possible by our unwillingness to compromise on the quality of our people and deliverables.

4

## **Staying ahead**

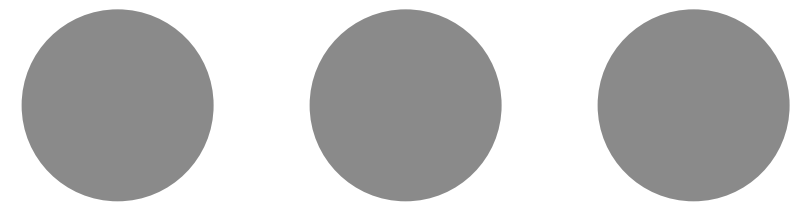
We remain close to the latest trend so that we can stay ahead of it. We are committed to pursue continual improvement and persistent application of knowledge, innovation, experience, and insight.

# OUR SERVICES

WYN has a team of experienced design engineers who have extensive experience and track records from wide range of developments both in local and region across a wide range of sectors:

- Commercial
- Institutional
- Residential
- Industrial
- Educational
- Mixed use development
- Office
- Hotel
- Fit out work





# **MECHANICAL & ELECTRICAL**



# WHAT DO WE PROVIDE?

## MECHANICAL & ELECTRICAL

We provide building services engineering design for a wide range of building types, scales, and climatic conditions, focusing on people-friendly, low energy cost-effective solutions.

Our engineers are highly experienced in the design of mechanical, electrical, and hydraulic systems for hotel, resort, office, residential, and large-scale commercial developments such as shopping centre – where we combine sensitivity to the requirements of individual users with those of building management.





# WHAT DO WE TARGET?

Our approach is client-focused, fast-track and climate responsive. Close attention to how a building will react to internal use and external conditions enable our engineers to design the most appropriate cooling, air handling, lighting, ventilation, water distribution and water use systems to achieve low energy outcome. To achieve an integrated design, we work closely with clients, architects, and contractors. We use the latest building information software techniques in the development of options to enable informed decision making and for the seamless coordination of project documentation.

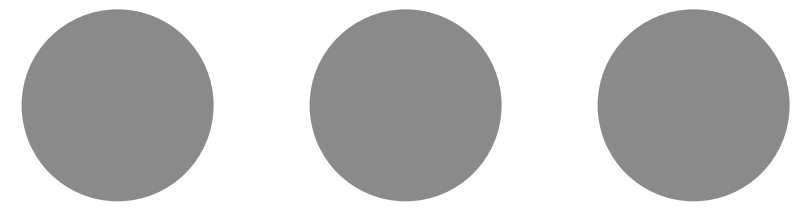




# OUR TEAM CAPABILITIES

Today's construction projects demand a full range of consulting skills to fulfill not only the needs of economics and planning but also to harmonize the development within the environment and meet social needs. Hence, it is increasingly critical to enlist practical, experienced help in meeting project needs. Practical problem solving is at the core of our service and by deploying a wide range of skills, we provide innovative and sensitive solutions to each project. Team capable of providing following services:

- Building Services Engineering
- Pre-acquisition, Due Diligence and Condition Surveys
- Engineering Feasibility Studies
- Technical Advisory Services
- Peer Review and Value Engineering
- Sustainability and Renewable Energy Design



# **CIVIL & STRUCTURAL**



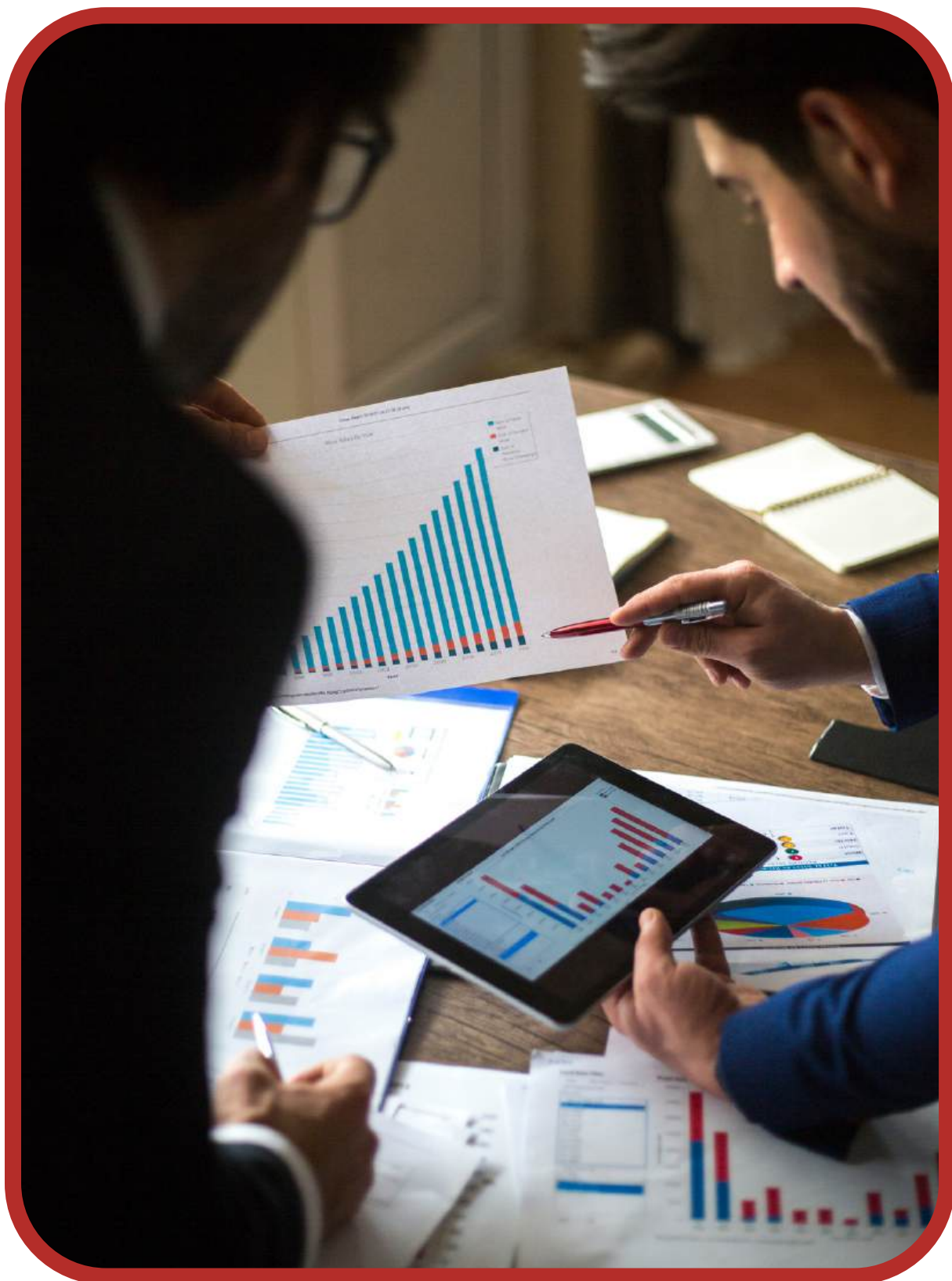


# WHAT DO WE PROVIDE?

## **CIVIL & STRUCTURAL**

Our civil & structural engineers have extensive experience in the design and construction of all types of structures – from individual small edifices to multi-unit development and low-rise long-span buildings to towering high-rise structures.

Our structural engineering team includes diverse talents, with experiences in working in dynamic, challenging, and complex built environments.

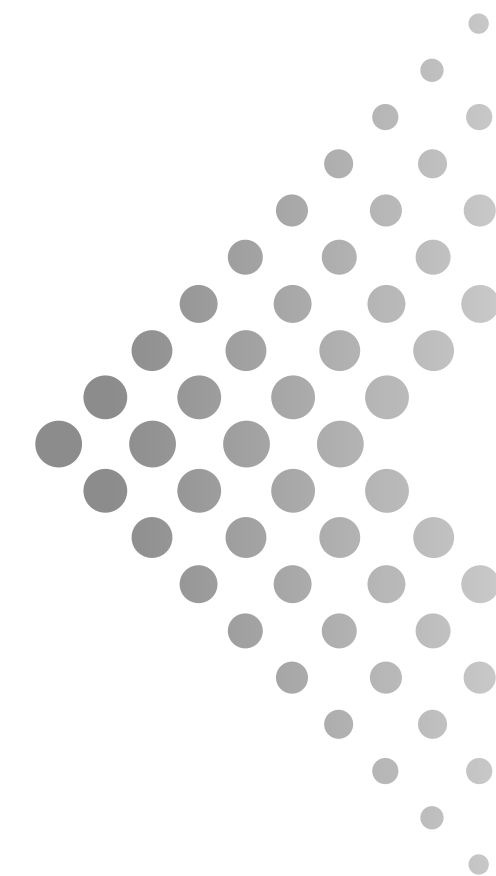


# WHAT DO WE TARGET?

Our areas include the design of long-span and high-rise structures and integration of structures, building services and sustainability measures in all building types. A key aspect of our approach is working with architects and designers at the concept stage of the project, when structural advice and option development can help define architectural intent, realise spatial qualities, increase net lettable areas, and improve layout flexibility whilst reducing capital costs, maximizing construction efficiency, and helping to build-in future adaptability.

Whatever the sector, scale, location, or structural material, we provide a practical coordinated service designed to maximise value and minimise construction time.

We offer a depth of experience, with the ability to find solutions to complex challenges and the flexibility to work with new technologies and design approaches.



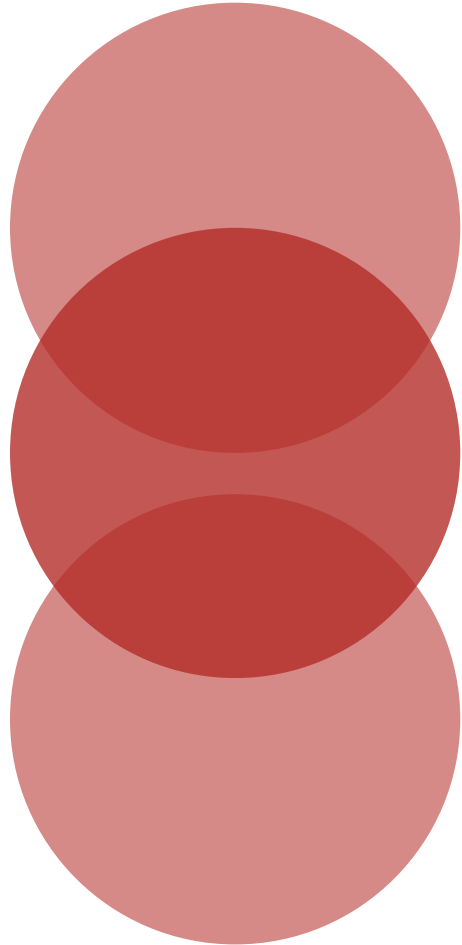


# OUR TEAM CAPABILITIES

Creativity is the key to WYN's exploratory business approach. We embrace a convergence of engineering skills and adaptation in a rapid evolving world and environment. Comprehensive structural engineering analysis and design hold a vital part of our role in providing solutions and delivering projects with best value to our clients. We value a synergetic working relationship with project team that balances the creative design process with practical technical C&S solutions. Team capable of providing following services:

- Civil & Structural Engineering
- Accredited Checker (AC)
- Engineering Feasibility Studies
- Technical Advisory Services
- Peer Review and Value Engineering
- Temporary Works such as Earth Retaining Stabilizing Structures (ERSS), heavy lifting and propping etc.
- Periodic Structural & Façade Inspection
- Site Implementation

# OUR TEAM



# WIDJAJA WONG

## DIRECTOR

- **BEng MSc PE MSIArb**
- **DfSP ACPE MIStructE CEng**
- **Anggota HAKI**

✉ [w.wong@wyn.com.sg](mailto:w.wong@wyn.com.sg) ☎ **+65 9786 2278**

Wijaya Wong is highly experienced in design and project delivery of infrastructure, industrial, commercial, residential as well as institutional projects.

Throughout his close to 30 years of working experience, Wijaya has worked in projects across Singapore, Indonesia, Malaysia, Hong Kong, and China.

Various types of building structural components are added to his portfolios including high-rise buildings, steel structures, post-tensioning, and precast structures.

One of the highlighted building projects under his portfolio is the Marina Bay Sands Integrated Resort, of which he is the Qualified Person (Design) for the Hotel Towers. He provided strong leadership for a team of engineers and technicians delivering structural design and construction support for the project. With his in-depth technical and management capability, he resolved complex technical challenges of the design and construction.

He has also been involved in a number of infrastructure projects, one of his notable achievements is the Singapore Mass Rapid Transit North East Line Contract 704 (SMRT NEL C704), of which he was the lead structural engineer for the design and construction support.



# NG HAN SIONG

## DIRECTOR

- Bachelor Engineering (Mech)
- Master of Engineering (Mech)
- Registered Professional Engineer (Mech)
- ASEAN Chartered Professional Engineer (ACPE)
- Member of The American Society of Heating, Refrigerating & Air-conditioning Engineer (ASHRAE)
- Green Mark Accredited Professional

✉ [hs.ng@wyn.com.sg](mailto:hs.ng@wyn.com.sg) ☎ +65 9683 3371

Han Siong has over 27 years of experience in building consultancy. He has been involved in various types of developments such as commercial, institutional, residential, hotel and industrial developments across Singapore, Indonesia, Vietnam, and Sri Lanka.

Throughout the years, Han Siong gained his skills and experience through a wide range of roles in these projects such as Lead Design Engineer, Project Lead and Qualified Person (Mechanical). Some of his notable involvements are projects like Reflections at Keppel Bay, University Town at NUS, Raffles Hotel Refurbishment, Duo Mixed Use Development and Havelock City Mixed Use Development at Colombo.

He specializes in the design and implementation of various Building Services and has been a registered Professional Engineer since 2011. A Certified Green Mark Manager since 2008. He is leading our M&E team.



# CHAN GUAN YUAN

## SENIOR CIVIL & STRUCTURAL ENGINEER

- M.Eng.(Civil)

✉ [gy.chan@wyn.com.sg](mailto:gy.chan@wyn.com.sg) ☎ +65 84547307

Guan Yuan is actively involved in the design and contractual aspects of engineering projects. His focus extends beyond technical expertise, as he prioritizes open communication and knowledge-sharing within his team and with stakeholders. By fostering a collaborative environment, Guan Yuan ensures seamless coordination and enhanced project execution.

Additionally, he strategically plans his career path, aiming to obtain chartership status to further enhance his professional standing and broaden his expertise. With a multidimensional approach to his work, Guan Yuan brings innovative design solutions and a commitment to continuous learning, positioning himself for growth and excellence in the field of engineering.





# 313 SOMERSET SHOPPING MALL AEI

313 @ Somerset is one of major shopping mall located at Singapore's premier shopping – Orchard Road. The mall consists of 8 retail levels in total with 3 basement level (B3 to B1) and 5 Levels above ground (L1 to L5) with direct access to Somerset MRT station at B2.

The proposed upcoming Asset Enhancement Initiative (AEI) work scopes over approximately 1,200 m2 area consist of:

- Slab over part of B1 & B2 void space for new Retails and F&B
- Partial slab over L4 and L5 atrium space for new Retails
- Reconfiguration of part of 1st to 5th storey Retail Space
- Reconfiguration of L6 Food Court
- Conversion of L7 car park to Retails and F&B.



# BCA ACADEMY – STEEL CONNECTION DESIGN

The new BCA Academy situated at Braddell road is a 25,000 meter square building consists of a 7-storey Zero Energy Building (ZEB) and a 16-Storey Super Low Energy Building (SLEB) where WYN was tasked to provide facade and barrier supports, as well as maintenance and removable water tank platforms, suiting the various needs of the building.

A refreshing challenge we encountered was designing connections interfacing between steel-timber structures. Steel belonging to our facade supports and timber belonging to the main building. This project a stepping-stone in encouraging us to look beyond the use of conventional steel and concrete materials for our buildings and striving towards a more sustainable built environment.



# GARDEN SUITES RESIDENCE AT JOO CHIAT TERRACE

Garden Suites Residence is a 5-storey private residential development at Katong, a heritage town in the Eastern region of Singapore.

WYN delivered integrated engineering services covering civil, structural, mechanical, and electrical engineering services. WYN work very closely with the Architect to tailor the engineering design to meet the different demand from each homeowner that comes together cohesively for this unique development.



# NEX SHOPPING MALL AEI

The A&A works is part of the Owner's Asset Enhancement Initiative (AEI) to enhance the overall shopping experience in this largest shopping mall in the North-East region. WYN's service include improvement to toilet ventilation system, energy efficient lightings, water efficiency fittings, etc. to further enhance the overall building operation efficiency and user experience.

One of the key challenges is to carry out the A&A works without disturbing existing mall operation. To achieve that, all the M&E works are meticulously planned and coordinated.



# REFURBISHMENT OF CONRAD SINGAPORE ORCHARD

Conrad Singapore Orchard (formerly known as The Regent Singapore) is a 12-storey luxury hotel consisting of 450 rooms and 3-storey podiums. The building was completed in 1979.

The recent refurbishment started in 2021 and was carried out in stages with hotel operation remain, consists of the following scopes:

- a) Replacing chiller plant (3 nos. 550RT water-cooled chillers) together with new chilled water pumps, distribution piping and cooling towers. Conversion from primary-secondary system to primary viable flow system for energy efficiency.
- b) Replacing existing aging 22kV switch gear for better reliability.
- c) Refurbish all 450-guest rooms with new M&E services over 10 months period.
- d) Refurbish podium area include BOH kitchen, Chinese Restaurant, Ballroom, Function Rooms, F&B and Retail Units.

Our team is familiar with refurbishment works in life building with works carried out in multiple phases.



# PARKWAY PARADE SHOPPING MALL

## AEI

The AEI includes alternation to the existing sunken plaza with a new canopy and pedestrian connection to the new MRT station at Parkway Parade shopping complex.

The proposed new underpass will connect TEL Marine Parade station and Parkway Parade shopping complex at Level 1 underneath existing Marine Parade Central Road. The proposed underpass structure falls within the MRT First Reserve of Railway Protection Zone.

It involves demolition of existing affected sunken plaza and structures at both L1 and B1 to facilitate construction of new underpass, canopy, and sunken plaza. This is classified as GBW project due to excavation more than 8m with SBP wall as ERSS.

This project also involves complex underground service diversion including SP gas pipe, road-side drain, sanitary pipe, and road diversion which requires liaising with numerous authorities and agencies such as BCA, PUB, LTA, NPark, SLA and SP Gas.

WYN provides full integrated engineering services covering both Civil and Structural, as well as Mechanical and Electrical Engineering for the project.



# CAPITA SPRING - STEEL CONNECTION DESIGN

The project is a 280-metre integrated development comprising of Grade A office, serviced apartments and social activity spaces spread over different storeys.

WYN was engaged by main contractor; Dragages Singapore Pte Ltd to redesigning Level 21 from in-situ concrete structures to steel structures, due to constructability issues as a result of trip volume underneath Level 21 against the original concrete floors.

WYN also provided design of other steelworks of the building such as equipment and façade support. The key challenge is to carry out the design under many site constraints. With careful planning and coordination with different stakeholders. WYN delivered practical and efficient solutions to address the constructability issues and met the project timeline.



# TCOMS NUS DEEPWATER OCEAN BASIN

Deep Ocean Basin (DOB) is a 60m length, 48m wide and 12m deep pool research facility set up by Technology Centre of Offshore and Marine, NUS. It is equivalent to 10 Olympic -sized pools in volume.

DOB can simulate extreme sea condition to facilitate the development of innovative concept, intelligent floating platform & ships, autonomous systems, marine robotics, and sub-sea systems.

WYN provide structural and mechanical engineering services for the fit-out works carried out by Edinburg Design, a Scotland based offshore and Marine Specialist Company.



# ARKEMA PLANT AT JURONG ISLAND

Arkema plant is polymer plant developed by Arkema at Jurong Island. It is comprising 1 block of 2-storey Technical Service & Maintenance Building consisting of office space, polymer and monomer laboratories and 1 block of 2-storey Administration Building.

The buildings are designed with laboratory facilities and pressure regime control.



# GEMS VILLE AT GEYLANG LORONG 13

Gems Ville is a 7-storey private residential development with mechanized car park at Geylang Lorong 13, located on the eastern fringe of the central region of Singapore.

WYN deliver integrated engineering services covering both Civil and Structural, as well as Mechanical and Electrical Engineering Services. WYN work very closely with the Architect to tailor the engineering design to meet the different demand from each homeowner that comes together cohesively for this unique development.



# PROJECT GATEWAY AT GEYLANG LORONG 9

Project Gateway at Geylang Lorong 9 is a 7-storey institutional building to house Youth with A Mission Singapore (YWAMSG) campus, a charity organization.

WYN had volunteered our service as part of initiative to contribute back to the society.

The new building build over the land of two (2) old shop houses. It was provided with efficient M&E system such as efficient air-conditioning, lighting, mechanical ventilation, water saving fittings etc.



# SOPHIA REGENCY

The project is a residential development consisting of a 5-storey apartment building with basement carpark which provides a total of 38 apartment units. The proposed site is situated at a congested residential precinct where the topographical ground levels difference of approx. 6 metres on one boundary. It involved complex geotechnical works which categorized under Geotechnical Building Works (GBW) and the site falls within the MRT Railway Protection Zone.



# J120 LTA ITH - SKY BRIDGE LAUNCHING

Providing technical design supports for the main contractor China Communication Construction Company Ltd (CCCC) for temporary works and steelwork connection designs of Sky Bridge launching. The Sky Bridge links between two building blocks (ie East Wing and West Wing) at height of approx. 33m from ground level and over 7 existing live MRT viaducts. The overall span of bridge is approx. 90m with an intermediate column.





# WYNN

3791 Jalan Bukit Merah #05-26  
E-Centre @ Redhill Singapore 159471

✉ [info@wyn.com.sg](mailto:info@wyn.com.sg) ☎ +65 63538500 🌐 [www.wyn.com.sg](http://www.wyn.com.sg)

